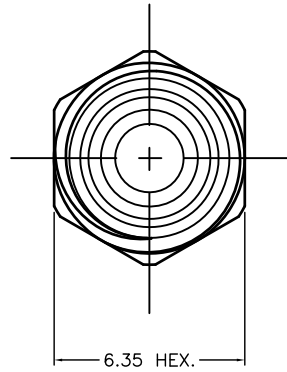
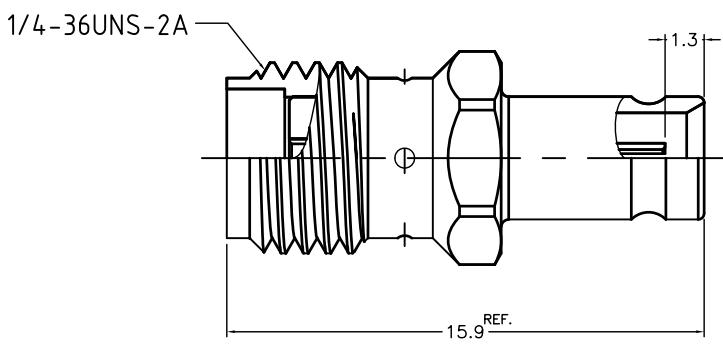


REV	DESCRIPTION	ECN NO.	NAME	DATE

ALL PARTS SATISFIED  
ROHS REQUIREMENTS  
产品符合ROHS标准



机械特性 (MECHANICAL CHARACTERISTICS)	
插入和拔出力 (Engagement and separation force)	N/A
联接螺母扭矩 (Recommended coupling nut torque)	15 inch pounds
联接螺母拉力 (Coupling nut retention force)	270 N-60 Lbs.
中心针保持力 Center contact retention force	Axial force 27 N-10 Lbs.
线缆拉力 Cable retention force	N/A
机械耐久性 (Durability)	≥ 500 cycles

环境参数 (ENVIRONMENTAL CHARACTERISTICS)	
工作温度 (Temperature range)	-65°C - +165°C

材料与电镀 (MATERIALS AND PLATING) UNIT: MICRO-INCHES		
主体 BODY	不锈钢 SUS303	铜底, 镍底, 镀金 10 μ" GOLD PL. 10 MIN./NICKEL ./COPPER
中心针 CONTACT PIN	铍铜 Be-Cu C17300	铜底, 镍底, 镀金 50 μ" GOLD PL. 50 MIN./NICKEL ./COPPER
绝缘体 INSULATOR	铁氟龙 TEFLON MIL-P-19468	N/A

电气性能 (ELECTRICAL CHARACTERISTICS)	
特性阻抗 (Impedance)	50 Ω
频率范围 (Frequency range)	0~4GHz
工作电压 (Voltage rating)	335
介电耐压 (Dielectric withstanding voltage)	500 V rms min.
RF 泄漏 (RF leakage) dB max.	N/A
接触电阻 (Contact resistance)	
内导体 (Center contact)	≤ 6mΩ
外导体 (Outer contact)	≤ 2mΩ
绝缘电阻 (Insulation resistance)	≥ 5000MΩ
插入损耗 (Insertion loss)	N/A
电压驻波比 (VSWR)	1.15 max. @ 0-4 GHz

CUSTOMER OUTLINE DRAWING

It is exclusively in written agreements that we provide our customers with warrants and representations as to the technical contained specifications and/or the fitness for any particular purpose. The facts and figures herein are carefully compiled to the best of our knowledge, but they are intended for general informational purposes only.

ISSUE	A	SCALE	3/1
UNLESS OTHERWISE SPECIFIED: 1) EDGES CO.15 MAX; 2) REMOVE ALL BURRS; 3) SURFACE ROUGHNESS Ra1.6; 4) UNITS:mm; 5) DIMENSIONS DECIMALS TOLERANCES ANGLES .x ±0.3 ±5° .xx ±0.2			

PART NO.	
APPROVED	Sam
CHECKED	Sam
DRAWN	Arming
DATE	2011-12-19

TITLE ADAPTER  
SMA FEMALE TO 1.0/2.3 FEMALE STRIGHT

DRAWING NO. 5MAF05S-A1F

Company Website: <http://www.superlinkrf.com>