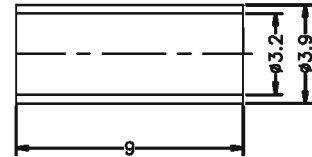
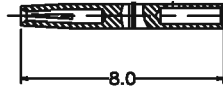
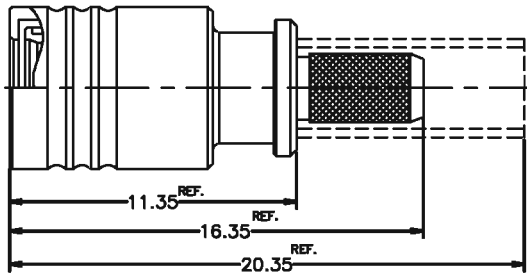
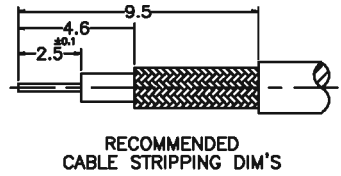


REV	DESCRIPTION	ECN NO.	NAME	DATE

NOTICE: ALL PARTS MUST MEET TO RoHS REQUIREMENTS

# NON-MAGNETIC CONNECTOR



机械特性 (MECHANICAL CHARACTERISTICS)	
中心针保持力 Center contact retention force	n/a
线缆拉拔力 Cable retention force	15 lbs min.
机械耐久性 (Durability)	≥ 500 cycles

电气性能 (ELECTRICAL CHARACTERISTICS)		
特性阻抗 (Impedance)	50 Ω	
频率范围 (Frequency range)	0~4.5GHz	
工作电压 (Voltage rating)	355V(rms) max.	
介电耐压 (Dielectric withstanding voltage)	500V(rms) min.	
接触电阻 (Contact resistance)	Initial	After environment
内导体 (Center contact)	≤5mΩ	≤8mΩ
外导体 (Outer contact)	≤2.5mΩ	≤5mΩ
绝缘电阻 (Insulation resistance)	≥1000MΩ	
插入损耗 (Insertion loss)	-	
电压驻波比 (VSWR)	14 dB MAX.(0-4.5 GHz)	

材料与电镀 (MATERIALS AND PLATING) UNIT: MICRO-INCHES		
主体, 固定筒, 后盖 BODY, BARREL, COVER	无磁性铜 NON-MAGNETIC BRASS	铜底, 镀三元合金 80MIN. ALBALOY 80MIN./COPPER
中心针 CONTACT PIN	铍青铜 Be-Cu C17300	铜底, 镀金50MIN. GOLD 50MIN./ COPPER
绝缘体 INSULATOR	聚四氟乙烯 TEFLON MIL-P-19468	N/A
铜管 FERRULE	紫铜 COPPER	铜底, 镀三元合金 80MIN. ALBALOY 80MIN./COPPER

环境参数 (ENVIRONMENTAL CHARACTERISTICS)	
工作温度 (Temperature range)	-55°C - +155°C

<p>It is exclusively in written agreements that we provide our customers with warrants and representations as to the technical contained specifications and/or the fitness for any particular purpose. The facts and figures herein are carefully compiled to the best of our knowledge, but they are intended for general informational purposes only.</p>	ISSUE	0	SCALE	5/1	PART NO.	-	<p>TITLE SMB ST PLUG--50 OHMS FOR RG-316 CABLE</p> <p>DRAWING NO. NM-5MBM11S-A02</p> <p>Company Website: <a href="http://www.superlinkrf.com">http://www.superlinkrf.com</a></p>
			<p>UNLESS OTHERWISE SPECIFIED: 1) EDGES CO.15 MAX; 2) REMOVE ALL BURRS; 3) SURFACE ROUGHNESS Ra1.8; 4) UNITS:mm; 5) DIMENSIONS DECIMALS TOLERANCES ANGLES x ±0.3 ±5 xxx ±0.2</p>		APPROVED	Arming	
			CHECKED	Arming			
			DRAWN	Dong			
			DATE	2010-08-31			